

MONTHLY MEMBERSHIP PROGRESS REPORT

LOCATION FLORIDA

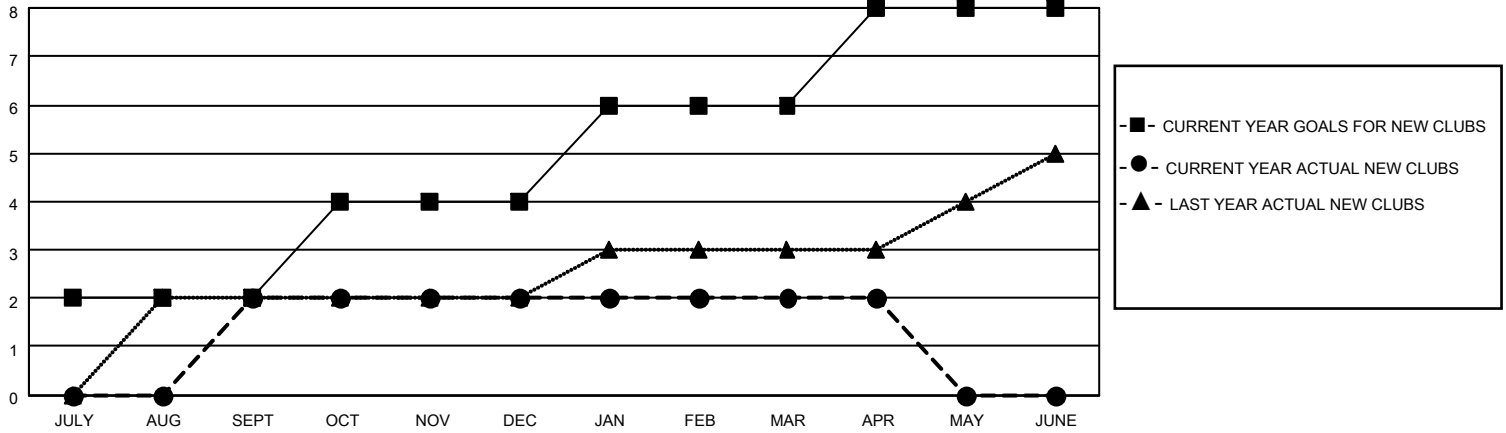
District 35 L

Results as of: 4/30/2023

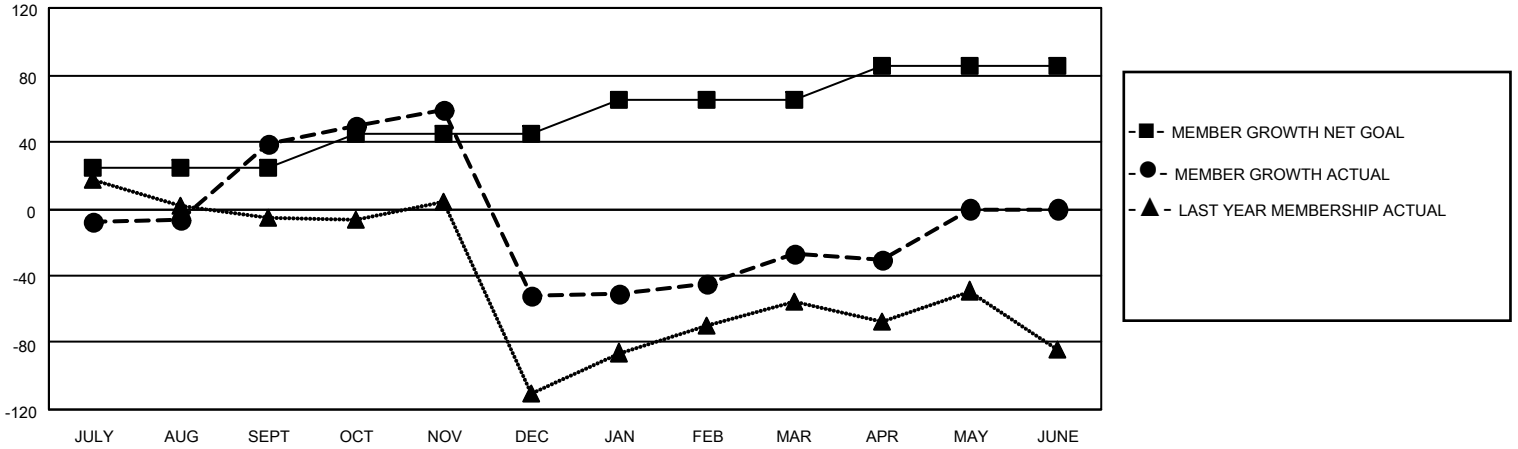
Clubs			
RESULTS FOR 2022-2023			
QUARTER	NEW CLUB GOAL	NEW CLUBS	DROPPED CLUBS
JULY/AUG/SEPT	2	2	3
OCT/NOV/DEC	2	0	4
JAN/FEB/MAR	2	0	0
APR/MAY/JUNE	2	0	0

Members			
RESULTS FOR 2022-2023			
QUARTER	MEMBER GROWTH NET GOAL	MEMBER GROWTH ACTUAL	DROPPED MEMBERS ACTUAL (including transfers)
JULY/AUG/SEPT	25	96	40
OCT/NOV/DEC	20	58	141
JAN/FEB/MAR	20	76	34
APR/MAY/JUNE	20	9	10

GOALS AND ACTUAL NEW CLUBS CUMULATIVE



GOALS AND ACTUAL MEMBERS CUMULATIVE



DROPPED CLUBS: 7	
<u>DROPPED MEMBERS</u>	
DECEASED	20
CLUB CANCELLED	36
OTHER	169
TOTAL	225

41 CLUBS OF 65 ADDED 1 OR MORE NEW MEMBERS

[CLICK HERE FOR CUMULATIVE MEMBERSHIP DATA](#)

<u>GENDER DISTRIBUTION</u>	
MALE	711 (58.47%)
FEMALE	503 (41.37%)
NON BINARY	1 (0.08%)
PREFER NOT TO ANSWER	1 (0.08%)
TOTAL FAMILY UNIT MEMBERS	256
FAMILY MEMBERS PAYING HALF DUES	129